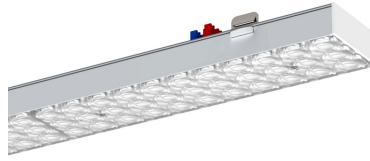


Installation	Pendant / Surface Mounted
Power Consumption (+-5%)	73 W
LED Module	Samsung SMD
Luminous Flux	11680 lm
Luminor Efficiency	160 lm/W
CCT (Correlated Color Temperature)	3000 / 4000 / 4500 / 5000 / 6000 / 6500 K
CRI (Color Rendering Index)	>80 / >90
Beam Angle	30° / 60° / 90° / 120° / Asymmetric 25° / 60°
Input Voltage	220-240V
Driver	Osram / Tridonic
Power Factor	>95
Ambient Temperature Range	-30°~+50°
Dimming	Optional - Dali / 0-10V / PWM
Ingress Protection Code	IP40
LED Lifespan	> 60,000 Hours
Color	Any RAL Color
Weight	2.5 KG
Dimensions	1434 x 64.5 x 31.5 mm



Perfect lighting fixture for retail stores

- The luminaire allows to switch between 4 power levels
55W / 60W / 66W / 73W
- Optical lens light distributor
- 8 types of beam angles
- Super high light efficiency - 160 Lm/W
- Allows to connect up to 35 fixtures to one electricity input
- big variety of connectors